

Tenor Index

Introduction

The government securities market is considered as the backbone of fixed income securities market and is the prime funding avenue for the government. It serves as a benchmark for portfolio management, an indicator of market performance and development, and also forms the basis for derivative products like options and futures. The price to yield sensitivity is different for each bond. In order to capture such non-uniform yield impact on various maturity buckets all outstanding securities are divided into 5 buckets based on their residual maturities.

BOND INCLUSION RULES

Data: All outstanding dated government securities classified based on their residual maturity

Issuer: Central Government

Price: Volume weighted average price (VWAP) or model price when there are no trades

Tenor: Minimum tenor is 1.5 years (Residual maturity on the index resetting date is considered)

Base Date: December 31, 2003

Base Value: 1000

Weighting: Market

Tenor Index Constituents Dec-24						
Tenor 1	8.33% GS 2026	6.97% GS 2026	10.18% GS 2026	7.33% GS 2026	5.74% GS 2026	8.15% GS 2026
	8.24% GS 2027	6.79% GS 2027	7.02% GS 2027	7.38% GS 2027	8.26% GS 2027	8.28% GS 2027
	6.64% GS 2027	7.17% GS 2028	7.10% GS SGrB 2028	6.01% GS 2028	7.06% GS 2028	8.60% GS 2028
	6.13% GS 2028	7.37% GS 2028	7.26% GS 2029	7.59% GS 2029	7.10% GS 2029	7.04% GS 2029
	6.45% GS 2029	6.75% GS 2029	6.79% GS 2029			
Tenor 2	7.88% GS 2030	7.17% GS 2030	7.61% GS 2030	5.79% GS 2030	5.77% GS 2030	9.20% GS 2030
	7.32% GS 2030	5.85% GS 2030	8.97% GS 2030	7.02% GS 2031	6.10% GS 2031	6.68% GS 2031
	6.79% GS 2031	6.54% GS 2032	8.28% GS 2032	8.32% GS 2032	7.26% GS 2032	7.95% GS 2032
	8.33% GS 2032	7.29% GS SGrB 2033	7.26% GS 2033	7.57% GS 2033	7.18% GS 2033	8.24% GS 2033
	6.57% GS 2033	7.10% GS 2034	7.50% GS 2034	6.19% GS 2034	6.79% GS 2034	7.73% GS 2034
Tenor 3	6.22% GS 2035	6.64% GS 2035	7.40% GS 2035	6.67% GS 2035	7.54% GS 2036	8.33% GS 2036
	7.41% GS 2036	7.18% GS 2037	6.83% GS 2039	7.23% GS 2039	7.62% GS 2039	6.92% GS 2039
Tenor 4	8.30% GS 2040	8.83% GS 2041	8.30% GS 2042	7.69% GS 2043	9.23% GS 2043	8.17% GS 2044
Tenor 5	8.13% GS 2045	7.06% GS 2046	7.72% GS 2049	7.16% GS 2050	6.67% GS 2050	6.62% GS 2051
	6.99% GS 2051	7.36% GS 2052	7.30% GS 2053	7.09% GS 2054	7.72% GS 2055	7.63% GS 2059
	7.19% GS 2060	6.80% GS 2060	6.76% GS 2061	6.95% GS 2061	7.40% GS 2062	7.25% GS 2063
	7.34% GS 2064	7.46% GS 2073	7.09% GS 2074			

INDEX LEVELS

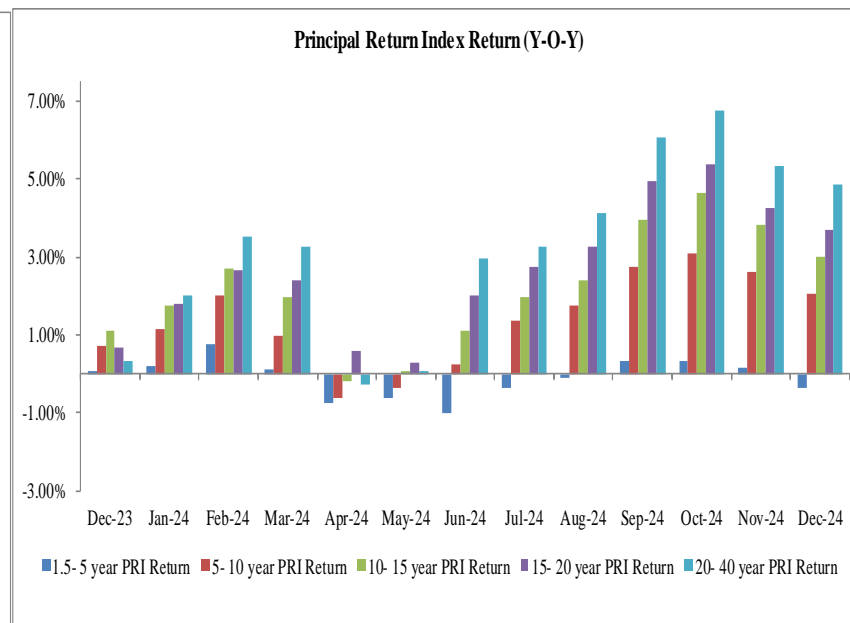
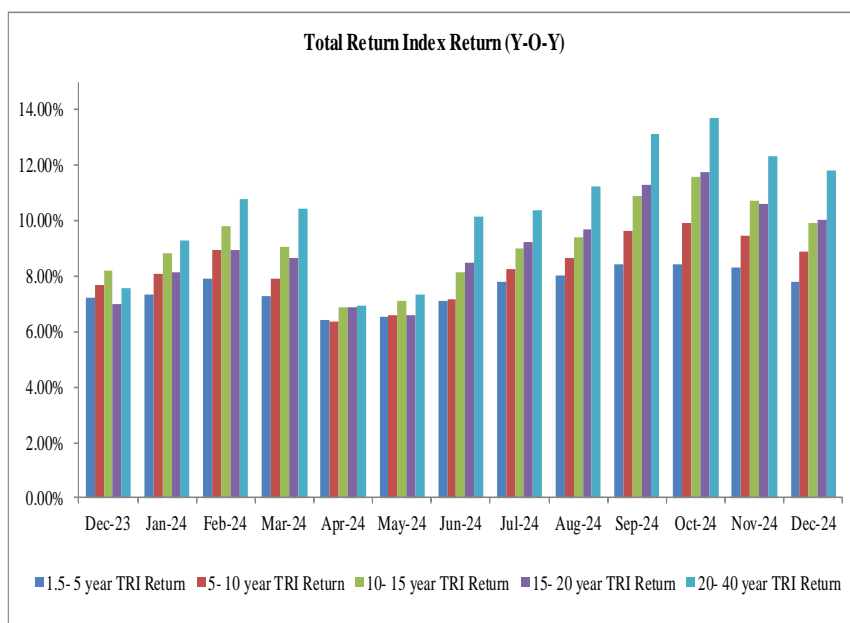
Tenor	1-5 year		6-10 year		11-15 year		16-20 year		20+ year	
Date	TRI	PRI	TRI	PRI	TRI	PRI	TRI	PRI	TRI	PRI
31-Dec-23	3829.1744	799.3757	3869.1497	833.3165	3852.4679	871.8445	3843.3136	863.2818	3810.7990	847.1341
30-Nov-24	4116.0497	796.8259	4201.4442	849.9610	4229.5023	898.4009	4215.8390	894.0269	4260.6783	888.6593
31-Dec-24	4138.5510	796.3517	4228.3016	850.4647	4254.3509	898.5229	4249.6076	895.8802	4287.4844	889.1661

INDEX PERFORMANCE

Month-over-month Return(%)

Period	TENOR1 TRI			TENOR2 TRI			TENOR3 TRI			TENOR4 TRI			TENOR5 TRI		
	2022	2023	2024	2022	2023	2024	2022	2023	2024	2022	2023	2024	2022	2023	2024
Jan	0.25%	0.55%	0.67%	-0.54%	0.48%	0.90%	-1.36%	0.43%	1.05%	-2.09%	0.25%	1.40%	-2.20%	0.58%	2.26%
Feb	0.51%	-0.06%	0.49%	0.20%	-0.02%	0.82%	0.79%	0.37%	1.30%	1.83%	0.48%	1.33%	2.74%	0.78%	2.27%
Mar	0.24%	1.31%	0.65%	0.00%	1.55%	0.53%	0.15%	1.57%	0.82%	-0.52%	1.41%	1.13%	-1.00%	1.11%	0.81%
Apr	-0.95%	1.05%	0.20%	-1.37%	1.40%	-0.18%	-1.28%	1.66%	-0.49%	-0.38%	1.47%	-0.31%	-1.37%	2.04%	-1.46%
May	-1.13%	0.77%	0.90%	-0.87%	1.12%	1.38%	-1.33%	1.54%	1.77%	-1.85%	1.96%	1.65%	-1.99%	2.00%	2.36%
Jun	0.50%	0.16%	0.75%	0.57%	-0.01%	0.56%	0.70%	-0.24%	0.81%	-0.06%	-1.42%	0.48%	-0.19%	-1.40%	1.43%
Jul	1.13%	0.32%	0.99%	1.33%	0.22%	1.30%	1.41%	0.16%	1.00%	1.43%	0.12%	0.85%	0.99%	0.36%	0.60%
Aug	0.59%	0.50%	0.75%	1.07%	0.60%	0.98%	1.45%	0.68%	1.09%	2.25%	0.68%	1.15%	2.67%	0.61%	1.44%
Sep	-0.31%	0.44%	0.84%	-0.57%	0.30%	1.29%	-0.32%	0.01%	1.52%	-0.67%	-0.04%	1.60%	-0.07%	-0.03%	1.87%
Oct	0.25%	0.33%	0.33%	0.32%	-0.33%	-0.02%	-0.02%	-0.53%	0.12%	0.07%	-0.56%	-0.14%	0.29%	-1.01%	-0.39%
Nov	1.25%	0.80%	0.66%	1.46%	1.15%	0.68%	1.71%	1.20%	0.34%	1.78%	1.22%	0.12%	2.27%	1.37%	-0.03%
Dec	0.38%	1.07%	0.55%	0.37%	1.23%	0.64%	0.26%	1.37%	0.59%	0.58%	1.37%	0.80%	0.20%	1.16%	0.63%

Period	TENOR1 PRI			TENOR2 PRI			TENOR3 PRI			TENOR4 PRI			TENOR5 PRI		
	2022	2023	2024	2022	2023	2024	2022	2023	2024	2022	2023	2024	2022	2023	2024
Jan	-0.33%	-0.05%	0.08%	-1.13%	-0.12%	0.31%	-1.98%	-0.18%	0.47%	-2.72%	-0.39%	0.77%	-2.83%	-0.03%	1.67%
Feb	-0.03%	-0.64%	-0.09%	-0.35%	-0.59%	0.26%	0.24%	-0.20%	0.75%	1.27%	-0.11%	0.74%	2.21%	0.22%	1.73%
Mar	-0.39%	0.68%	0.03%	-0.46%	1.10%	0.08%	-0.49%	0.95%	0.22%	-1.19%	0.76%	0.50%	-1.67%	0.47%	0.20%
Apr	-1.57%	0.47%	-0.41%	-2.00%	0.81%	-0.79%	-1.91%	1.08%	-1.09%	-1.02%	0.87%	-0.95%	-2.01%	1.46%	-2.09%
May	-1.77%	0.18%	0.30%	-1.50%	0.53%	0.80%	-1.98%	0.97%	1.21%	-2.55%	1.39%	1.07%	-2.68%	1.44%	1.81%
Jun	-0.10%	-0.43%	-0.81%	-0.04%	-0.61%	-0.03%	0.08%	-0.84%	0.24%	-0.73%	-0.92%	0.81%	-0.45%	-2.04%	0.85%
Jul	0.55%	-0.28%	0.39%	0.74%	-0.38%	0.72%	0.82%	-0.44%	0.42%	0.80%	-0.51%	0.24%	0.36%	-0.25%	0.01%
Aug	0.00%	-0.10%	0.15%	0.48%	0.01%	0.40%	0.86%	0.09%	0.52%	1.64%	0.05%	0.55%	2.08%	0.01%	0.87%
Sep	-0.92%	-0.16%	0.25%	-1.19%	-0.30%	0.72%	-0.94%	-0.59%	0.96%	-1.32%	-0.67%	1.01%	-0.70%	-0.64%	1.33%
Oct	-0.37%	-0.27%	-0.27%	-0.29%	-0.94%	-0.61%	-0.64%	-1.15%	-0.46%	-0.58%	-1.21%	-0.76%	-0.34%	-1.65%	-0.99%
Nov	0.66%	0.21%	0.06%	0.87%	0.56%	0.10%	1.13%	0.61%	-0.24%	1.19%	0.62%	-0.49%	1.70%	0.78%	-0.62%
Dec	-0.22%	0.48%	-0.06%	-0.23%	0.65%	0.06%	-0.34%	0.80%	0.01%	-0.06%	0.77%	0.21%	-0.41%	0.56%	0.06%



DISCLAIMER:

This document contains data/information relating to the construction of CCIL Indices and is for information purpose only. Data/information in this document is subject to change without prior notice. CCIL or its agents makes no representations or warranties, express or implied about the completeness, accuracy, reliability or suitability of this document. CCIL or its agents accepts no liability for direct, indirect, incidental or consequential damages, losses arising out of, or in connection with the use of data/ information provided in this document. All proprietary rights, statutory or otherwise, in this document shall remain exclusive property of CCIL and any reproduction, distribution or transmission or modification is prohibited except with explicit approval of CCIL.

Research Department

The Clearing Corporation of India Limited, CCIL Bhavan, College Lane, off S K Bole Road, Dadar (West), Mumbai - 400 028, Phone: 6154 6587/6581, res_sur@ccilindia.co.in